



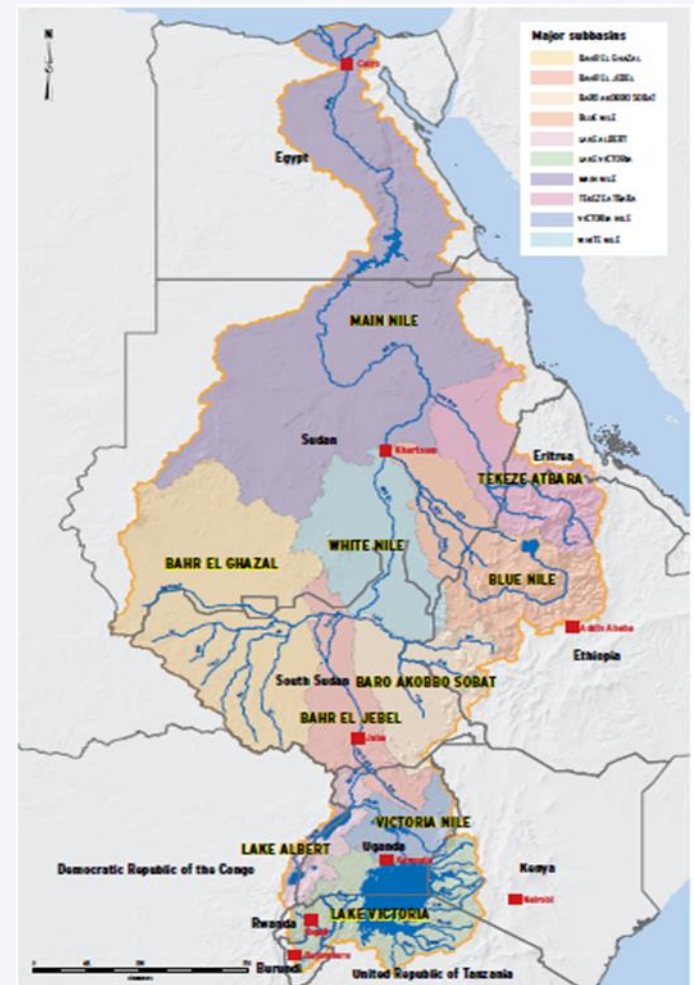
NILE-SEC
NILE BASIN INITIATIVE
INITIATIVE DU BASSIN DU NIL

Transboundary Rivers in the Context of Geopolitics: Ecology, Environmental Protection and Water Resource Sharing

The Nile Basin



- Source of livelihood for > 250 million people in 11 countries
- Covers an area of 3.2 million sq km
- Most part of the basin is arid/semi-desert
- Over 80 percent of river flow originates from a relatively small part of the basin that is prone to regular climate extremes
- Most current uses are in the d/s arid/semi-desert part
- Most undeveloped part is upstream in water source countries
- Home to fragile ecosystems and world-class environmental assets



Nile Sub-Basins

- Eastern Nile
- Equatorial Nile



Egypt



Eritrea



Sudan



Ethiopia



South Sudan



Uganda



Kenya



DR Congo



Rwanda



Burundi



Tanzania



About the Nile Basin Initiative.



- The Nile Basin Initiative (NBI) is an intergovernmental partnership of ten Nile Basin countries:



Burundi



DR Congo



Egypt



Ethiopia



Kenya



Rwanda



South Sudan



The Sudan



Tanzania



Uganda

- Established on February 22, 1999, by Ministers in charge of Water Affairs in the Nile Basin countries.
- The only basin-wide institution mandated to facilitate the cooperative development and management of the shared Nile resources on behalf of the 10 Member States.



NILE-SEC
NILE BASIN INITIATIVE
INITIATIVE DU BASSIN DU NIL

Shared Vision Objective.

(Agreed upon by all Nile Basin countries in 1999)

‘To achieve sustainable socio-economic development through the equitable utilisation of, and benefit from, the common Nile Basin water resources.’

NBI Objectives.



- To develop the Nile Basin water resources in a sustainable and equitable way to ensure prosperity, security and peace for all its peoples.
- To ensure efficient water management and the optimal use of the Nile resources.
- To ensure cooperation and joint action between the riparian countries, seeking win-win gains.
- To target poverty eradication and promote economic integration.

Transboundary Water Resources



- The Nile Basin is a habitat to critical flora and fauna that are under threat of extinction. As such, there is a need for water resources management to sustain their survival.
- NBI's mandate is on transboundary water resources management and development and through the Nile Basin Sustainability Framework (NBSF), has developed a suite of policies, guidelines, and strategies aimed at sustaining the water resources of the Nile.

Transboundary Water Resources (cont'd)



- NBI has promoted consultative and participatory approaches towards the development of mechanisms for transboundary water resources management and development.
- Examples of policies, strategies and guidelines for good practices in transboundary water resources management include:
 - Environmental and Social Policy
 - Environmental and Social Safeguards
 - Gender mainstreaming
 - Wetlands Strategy
 - Climate Change Strategy

Transboundary Water Resources (cont'd)



- The development of transboundary water resources management is a role played by riparian countries.
- NBI facilitates this process by providing a platform for dialogue on good practices and policy development for sustainable management of the Nile water resources.

Environmental Protection in the Nile Basin

- NBI has undertaken TEEB (The Economics of Ecosystems and Biodiversity) studies on critical transboundary wetlands in the Nile Basin such as the Machar Marshes, the Sudd, Sio Siteko, Semiliki, and Bugesera.
- NBI has also conducted an inventory of wetlands of transboundary significance and compiled a knowledge base.
- NBI has conducted an initial assessment of peatlands within the Nile Basin.

Environmental Protection in the Nile Basin (cont'd)

- NBI has conducted environmental flow (e-flows) assessments, which refers to the minimum water flow required to preserve the health of the Nile river, ensuring that the existing ecosystems are not compromised.
- The methodology developed will be applied to other critical sectors of the river for a more sustainable approach to water resources management and development.
- Plans are underway to expand these assessments to other wetlands of the Nile Basin.

NBI's Commitment to Nile Basin Countries



- NBI is committed to building the capacity of Nile Basin countries to develop policies on determining e-flows in their respective reaches of the Nile River.

Find out more...



www.nilebasin.org



Nile Basin Initiative



@nbiweb



NILE-SEC
NILE BASIN INITIATIVE
INITIATIVE DU BASSIN DU NIL

THANK YOU!